



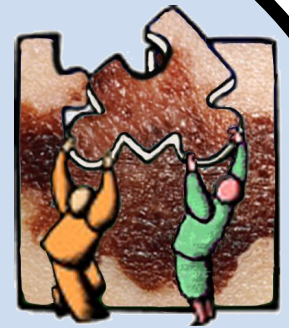
Joint Meeting

of the

German Society for Cell Biology

and

Frontiers in Melanoma Research of the German Melanoma Research Network



Melanoma Research
Network



University of Regensburg
March 10-13, 2010

Abstract submission December 20, 2009

**Local Organizers Prof. Dr. Anja Bosserhoff
Dr. Silke Kuphal
Andrea Sassen**

Meeting president:

Prof. Dr. Anja Bosserhoff
Institute of Pathology
University of Regensburg
Franz-Josef-Strauss-Allee 11
93053 Regensburg, Germany
phone +49 (0) 941-944-6705
fax +49 (0) 941-944-6602

anja.bosserhoff
@klinik.uni-regensburg.de

Congress organization:

MCI Deutschland GmbH
MCI-Berlin Office
Katrin Taepke
Markgrafenstraße 56
10117 Berlin, Germany
phone +49 (0)30 20 45 924
fax +49 (0)30 20 45 950

info@zellbiologie2010.de

Topics

- Frontiers in cell biology
 - Cell signalling
 - Epigenetics
 - miRNA/TUFs
- Stem (cancer) cells
- From embryology to tumor development
- Cell migration & metastasis
- Cell-cell-contacts & cell polarity
 - Angiogenesis
 - Apoptosis
- Systems biology & modelling
 - Cellular metabolism
- New methods in cell biology
 - Cytoskeleton
 - Cell division & cell cycle regulation
 - Nuclear transport
- Cell-matrix-adhesion
- New players in melanoma development & progression
 - Protein modification
 - Vesicle transport
 - Molecular basis of tumor therapy



Organisation der
Verbinden Nationen für
Bildung, Wissenschaft,
Kultur und Kommunikation



Altstadt von Regensburg
mit Stadthof
Weiterbestände
seit 2006

Old City of Regensburg

UNESCO World Heritage since 2006

www.zellbiologie2010.de